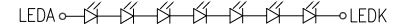
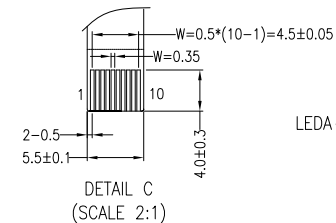
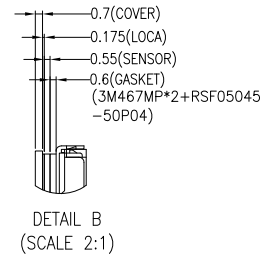
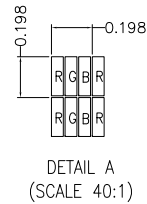
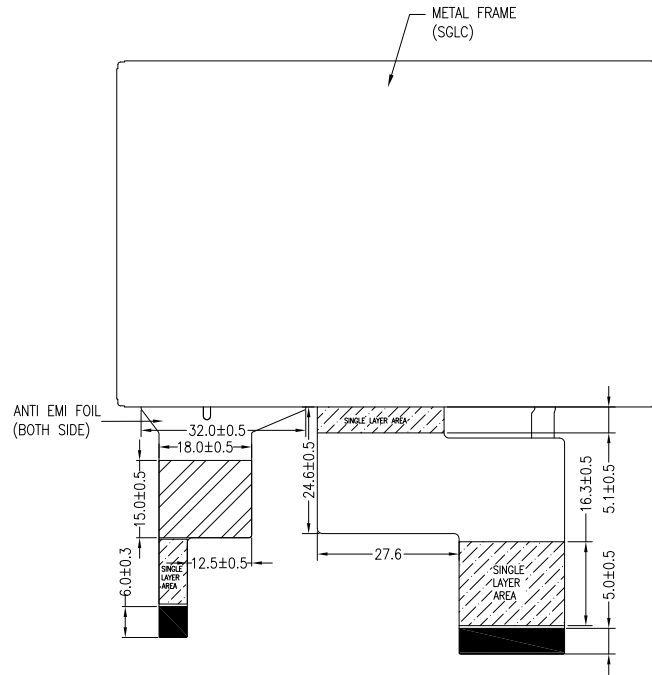
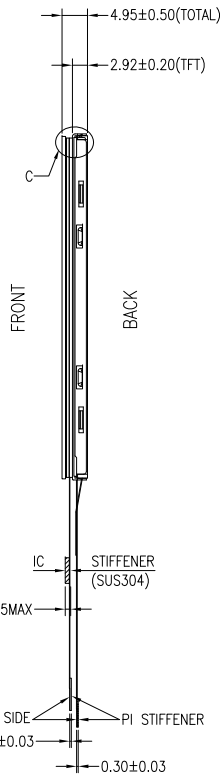
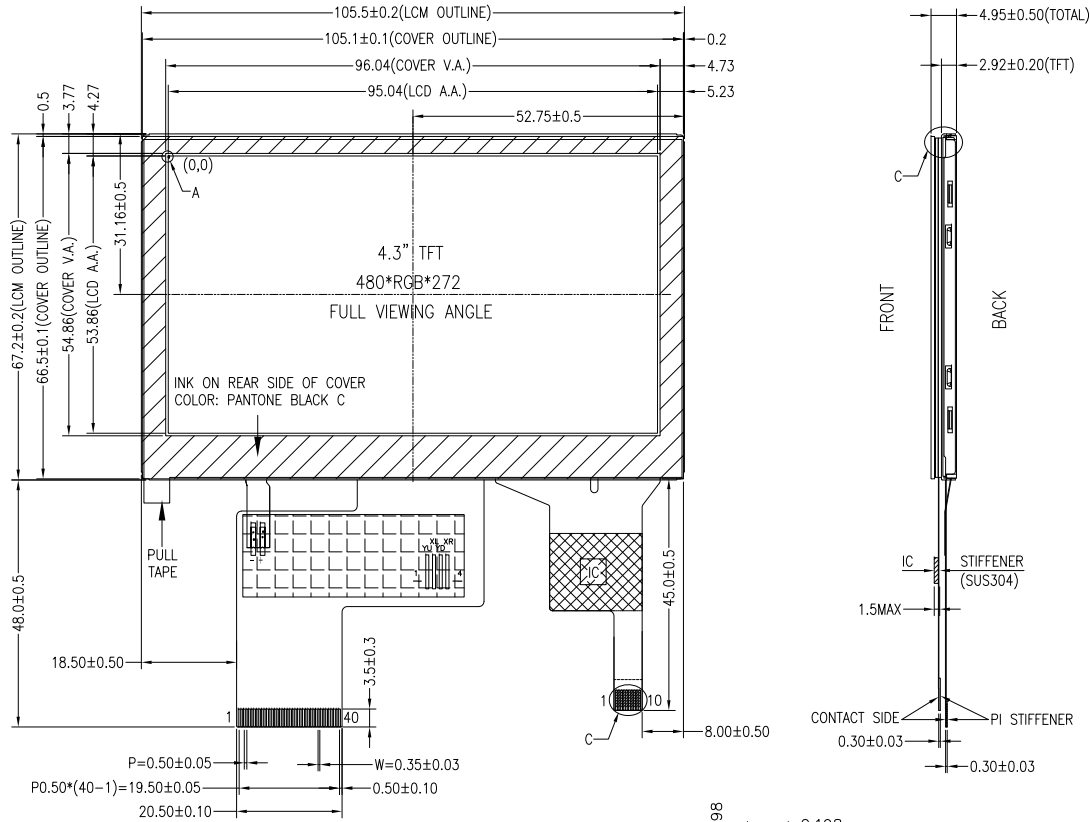


NO MECHANICAL HOUSING TO HOLD THE TFT AND THE TOUCH PANEL ON THIS PRODUCT, SO THE END UNIT'S MECHANICAL DESIGN MUST INCLUDE A HOUSING FOR PREVENTING THE SEPARATION OF THE TFT AND THE TOUCH PANEL.



PIN ASSIGNMENT FOR CTP		PIN ASSIGNMENT FOR LCM	
PIN	SYMBOL	PIN	SYMBOL
1	VSS	1	LEDK
2	VCC	2	LEDA
3	SCL	3	GND
4	NC	4	RESET
5	SDA	5	GND
6	NC	6	CS
7	/RST	7	WRX
8	NC	8	RDX
9	/INT	9	DCX
10	VSS	10	GND
		11	DO
		12	D1
		13	D2
		14	D3
		15	D4
		16	D5
		17	D6
		18	D7
		19	D8
		20	D9
		21	D10
		22	D11
		23	D12
		24	D13
		25	D14
		26	D15
		27	GND
		28	TE
		29	VCI
		30	IOVCC
		31	NC
		32	NC
		33	NC
		34	NC
		35	NC
		36	NC
		37	NC(YU)
		38	NC(XL)
		39	NC(YD)
		40	NC(XR)

NOTES FOR TFT:

1. DISPLAY TYPE: TFT, TRANSMISSIVE, NORMALLY BLACK
2. OPERATING VOLTAGE: VCI=3.3V (TYP.)
3. VIEWING DIRECTION: FULL VIEWING ANGLE
4. DRIVER IC: NV3041
5. LED BACKLIGHT: WHITE LED, If=20mA, Vf=19.6V~23.8V
6. TOP POLARIZER SURFACE TREATMENT: ANTI-GLARE
7. RECOMMEND MATCHING CONNECTOR: HRS FH28-40S-0.5SH OR EQUIVALENT

NOTES FOR OTHERS:

1. OPERATING TEMP.: -20°C ~ 70°C
2. STORAGE TEMP.: -30°C ~ 80°C
3. SURFACE LUMINANCE: 210 CD/M² (TYP.)
4. ONLY THE SINGLE LAYER AREA ON FPC IS BENDABLE AND THE MINIMUM BEND RADIUS IS 1.5MM
5. GENERAL TOLERANCE: ±0.3MM
6. ROHS COMPLIANT

NOTES FOR CTP:

1. 4.3 INCH PROJECTIVE CAPACITIVE TOUCH PANEL
2. COVER GLASS + SENSOR GLASS + FPCA
3. OPERATING VOLTAGE: VCC=3.3V
4. DRIVER IC: FT5446-P03
5. INTERFACE: I²C
6. RESOLUTION: 480*272
7. MULTI FINGER: UP TO 5
8. HARDNESS OF COVER SURFACE: 7H
9. FIRMWARE FILE: MI0430CRP-C11 (FT5446-P03)_FIRMWARE_V09_20200423

Mit MULTI-INNO TECHNOLOGY CO., LTD.

DRAWN BY:	RITA	2023.11.06	MODULE P/N:	MI0430ALT-1CP
CHECKED BY:			SCALE :	1/1
APPROVED BY:			UNIT:	mm
VERSION NO:	01		SHEET NO.:	1/1
DESCRIPTION:	TFT + CTP MODULE			

01	FIRST ISSUE	RITA	2023.11.06
VER.	REVISED DESCRIPTION	REVISOR	DATE